



VESSEL AUTOMATION

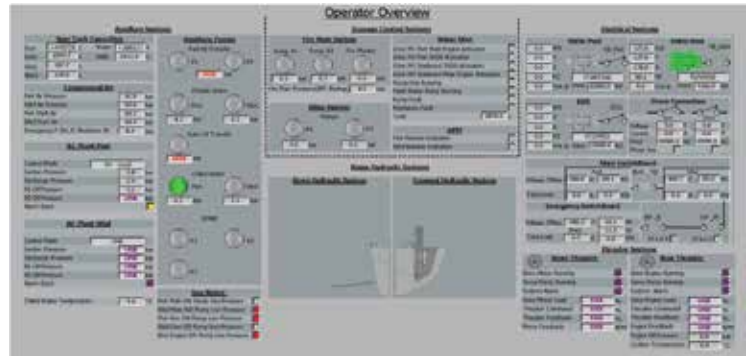
Vessel automation is driven by advancements in sensor technologies, computer systems, and communication networks. The goal is to enhance the overall efficiency of maritime operations while ensuring the safety of the vessel, crew, and cargo.

VESSEL AUTOMATION

The processes involved in a ship's operation are as complex as they are diverse. Optimum co-ordination can only be achieved by using an integrated, transparent control system, thereby ensuring profitability of the ship's operation. Our integrated automation solutions unlock the potential for this and eliminate sources or errors across all on board processes. They also minimize potential operating error sources and thus are effective in protecting people and technology from risk.

On a ship there are many parameters that need to be controlled or monitored including temperature, pressure, level, viscosity, flow control position of vessel, speed, torque control, voltage, current, machinery status (on/off), and equipment status (open/closed). As the market is driving ship owners to become more efficient with reduced staff on board it called for an automatic

control and monitoring system for the ship that enabled unattended operation of machinery spaces. Vessels capable of safe operation at any period of time qualify as UMS (Unattended Machinery Space) ships.



FULL MONITORING, AUTOMATION AND CONTROL

- Ship System Integration
- Alarm and Monitoring
- Control of Critical Systems
- Deflection
- Bridge Pilot Monitoring System
- Valve Automation
- Redundant PLC Based System
- ABS Approved PLC Components available worldwide.
- Standard or custom designed touch screen display graphic
- Extensive experience in providing systems that can meet ABS, Lloyds, DNV, Solas and US Coast Guard

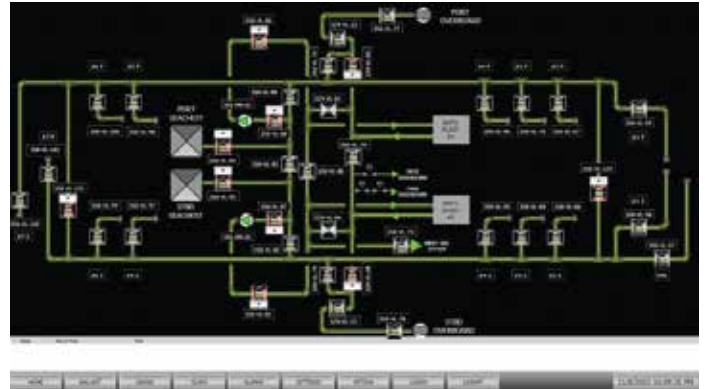
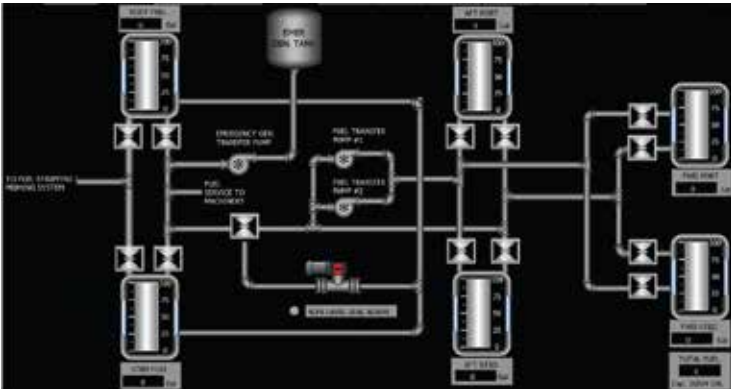


HOW YOU CAN BENEFIT FROM OUR AUTOMATION SOLUTIONS

- Increased efficiency for all onboard processes
- Scalability and future proofing
- Cost-effectiveness and safe investment
- Remote monitoring
- Readily available equipment from manufactures such as Siemens, Wago, Rockwell, Redlion etc.
- In house Service Technician, Engineer and Software Staff with 24/7 support

FULL CONTROL OF ALL PROCESSES

Automation solution that integrates all onboard technical processes in a unified system and control their interaction in line with defined parameters. Easy-to-operate system overviews are integrated with subsystems via standardized interfaces, enabling the crew to make better-informed decisions. Your operators will have full control of all processes and be able to react quickly and appropriately in all situations.





191 JAMES DRIVE WEST
ST ROSE, LOUISIANA 70087

emonitor@emi-marine.com
www.emi-marine.com

TEL: +1 504.620.9800
FAX: +1 504.620.9801

